



My Rosary
v. 1.0

Installation Instructions

Copyrights: Mladen Banović, 2009.

Some pictures and the rosary text is with approval taken from the following web sites:

www.katolici.org

<http://www.madonnashopsonline.com>

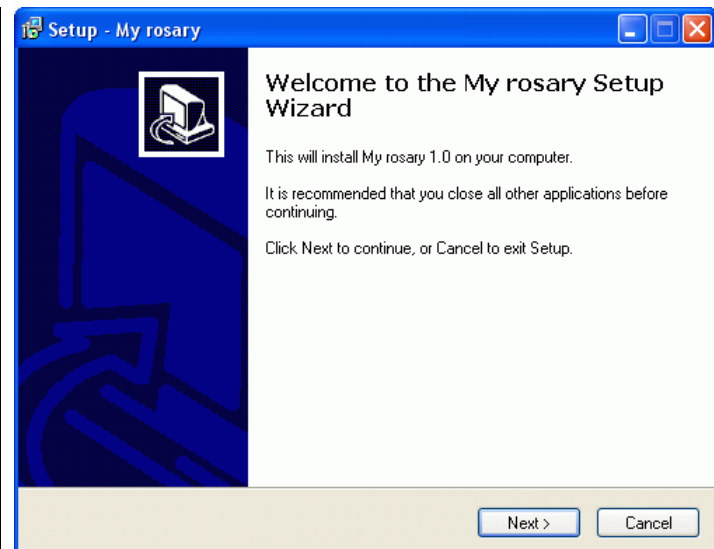
LabVIEW is a Trademark of National Instruments company

Author of the program *My rosary* declines the liability for any consequence of installation and usage of the program. It is put on disposal in a good faith, and its installation and usage is on the personal responsibility.

Instructions for installation of the program *My rosary*

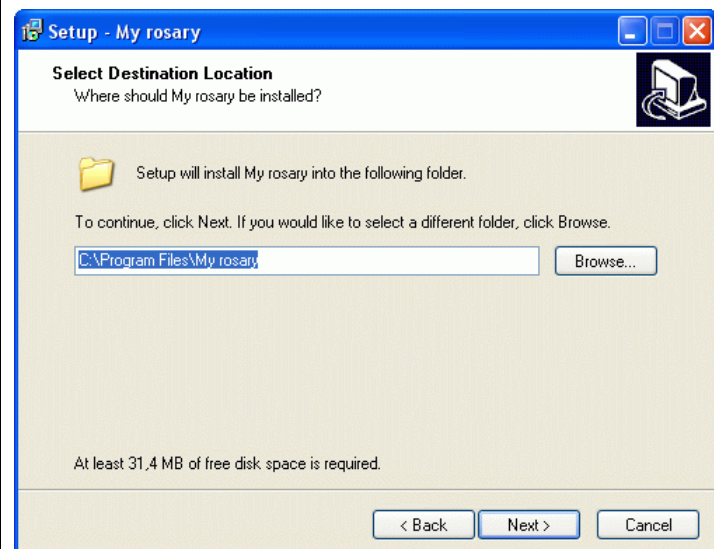
Activate installation program `My_rosary_setup_1_0.exe`, and the window displayed on the figure will appear.

Press the „Next“ button.



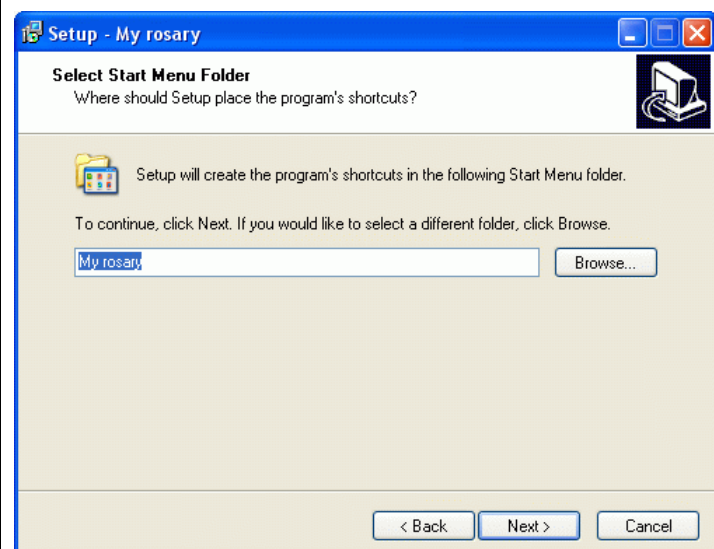
Selection of the folder in which the program is to be installed.

Press the „Next“ button.



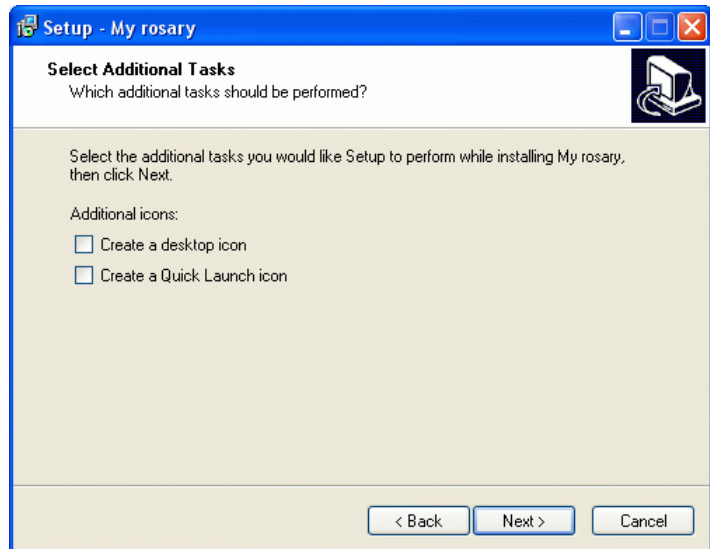
Selection of a menu folder of the program.

Press the „Next“ button.



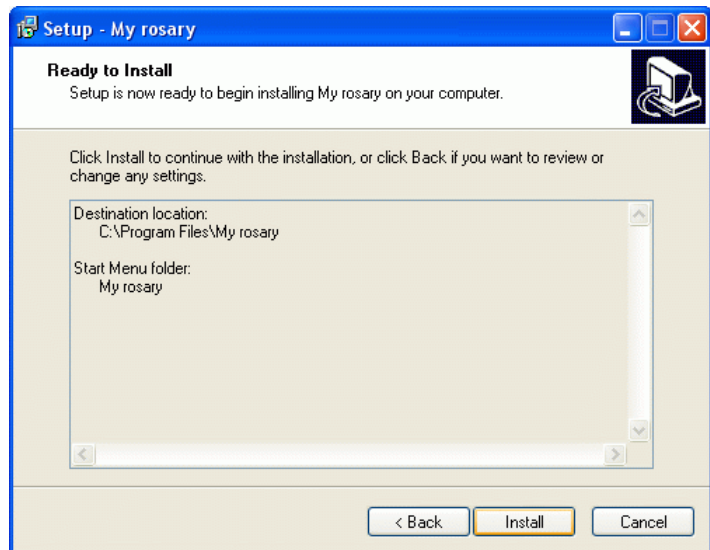
Selection of additional shortcuts.

Press the „Next“ button.



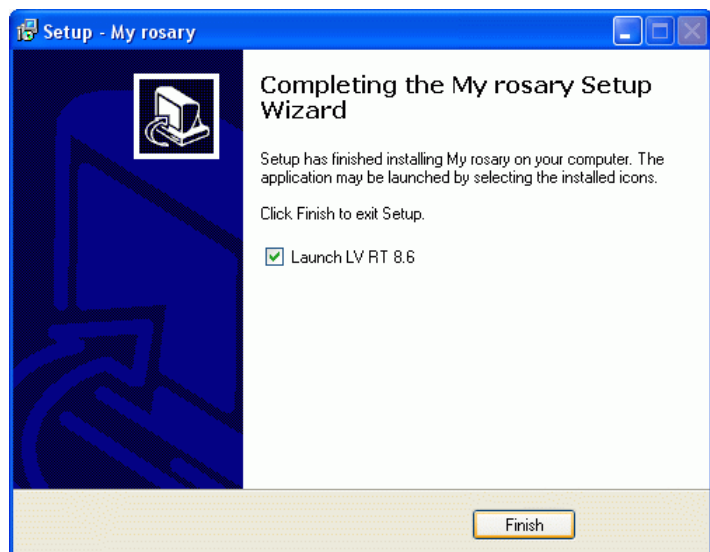
Display of selected settings for installation of the program.

Press the „Install“ button.



After My rosary installation is finished, it is necessary to install LV RT 8.6, if it is not installed on the computer.

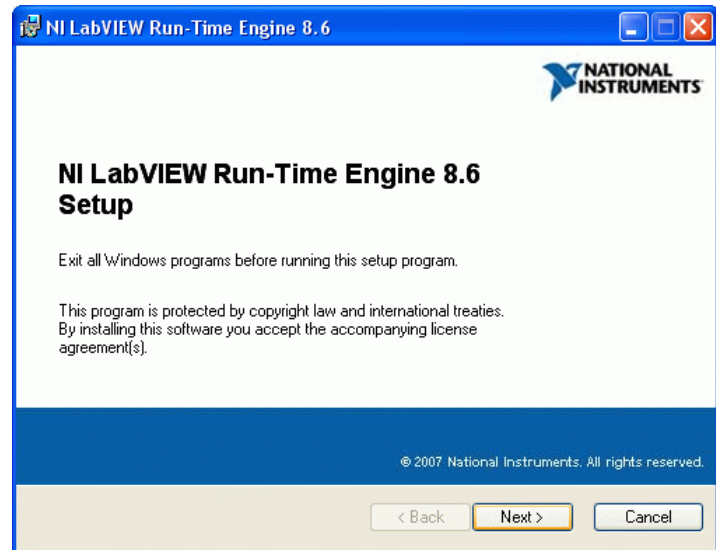
Press the „Finish“ button, and the LV RT installation will start.



Instructions for installation of the program *LabVIEW Run-Time Engine*

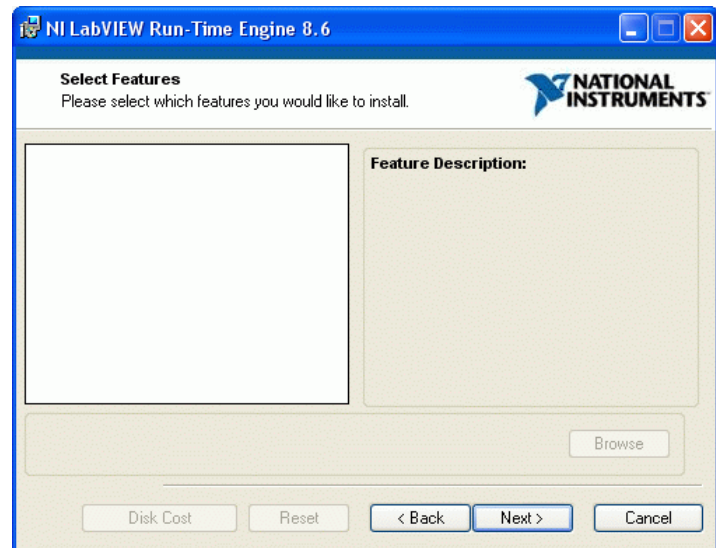
Beginning of LV RT installation (LabVIEW Run-Time Engine).

Press the „Next“ button.



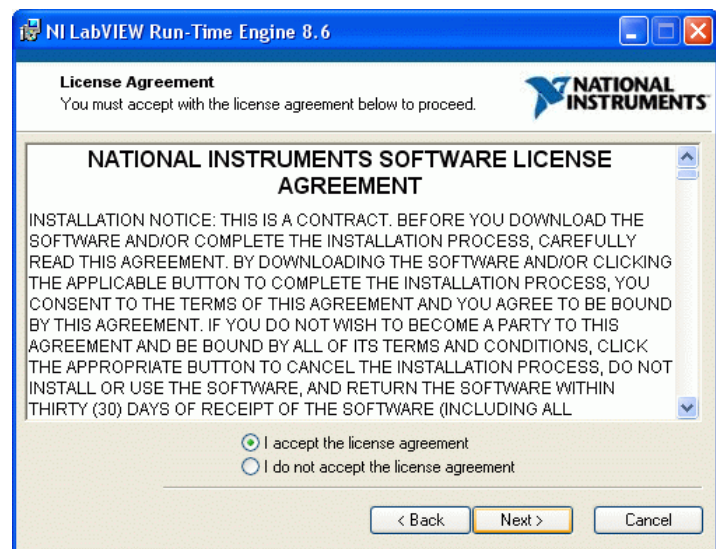
It is not necessary to select anything.

Press the „Next“ button.

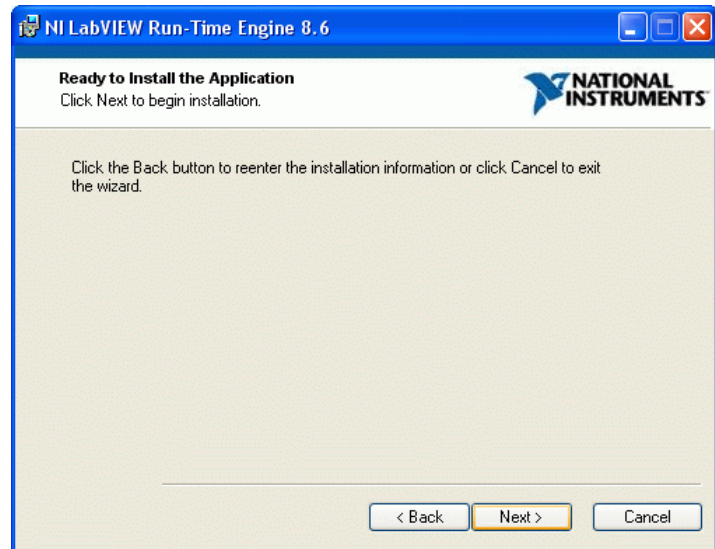


Accept the licence agreement selecting „I accept the licence agreement“.

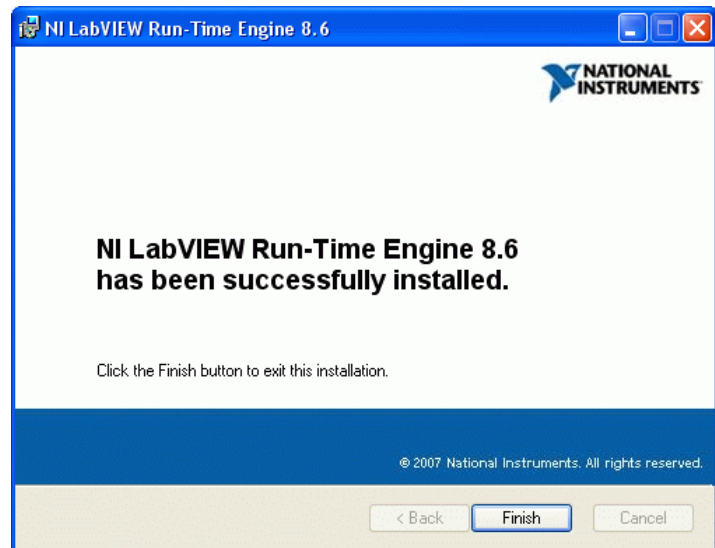
Press the „Next“ button.



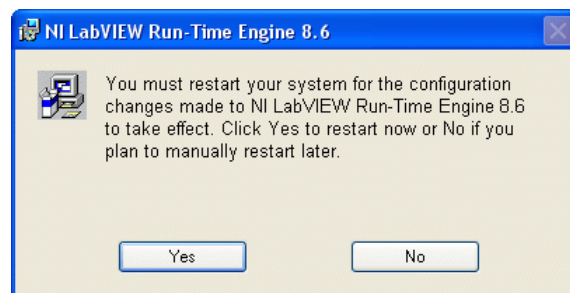
Press the „Next“ button to start the LV RT installation ...



After the installation press the „Finish“ button.



Computer must be restarted, so press the „Yes“ button.



After a successful installation of *My rosary* and LV RT programs, the program *My rosary* can be used.