



***My Rosary***  
v. 1.0

**User Instructions**

**Copyrights: Mladen Banović, 2009.**

Some pictures and the rosary text is with approval taken from the following web sites:

[www.katolici.org](http://www.katolici.org)

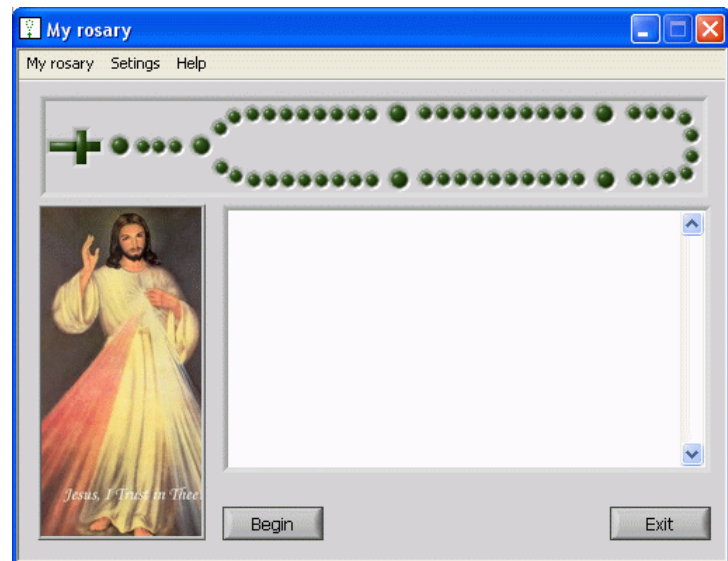
<http://www.madonnashopsonline.com>

LabVIEW is a Trademark of National Instruments company

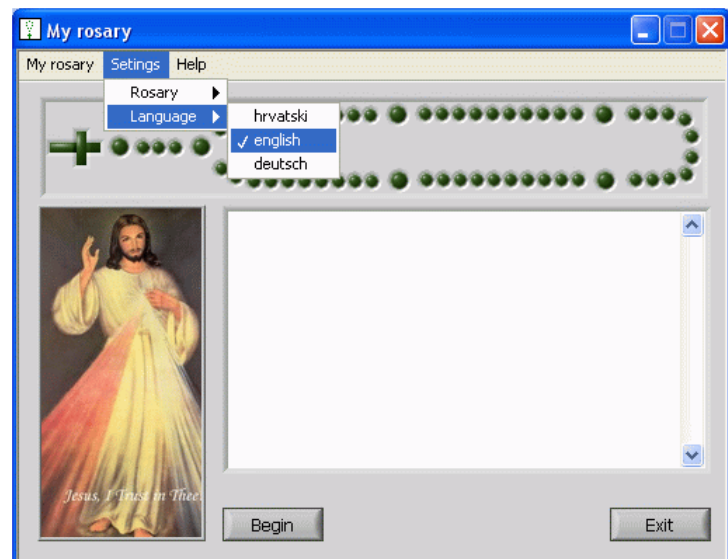
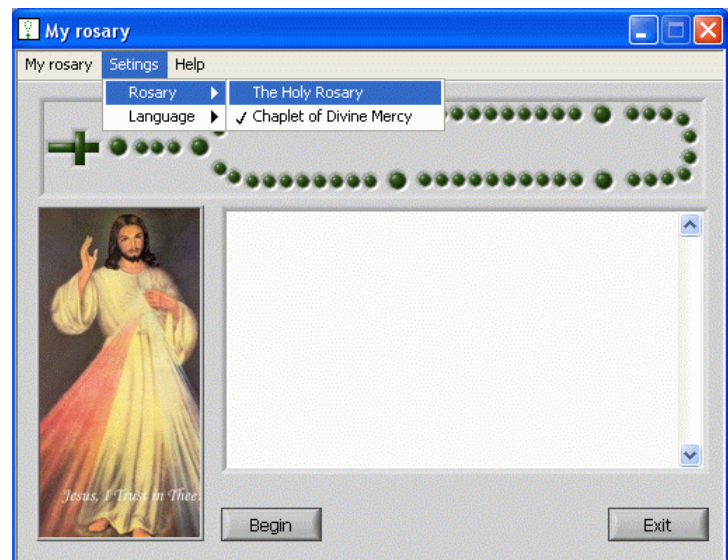
Author of the program *My rosary* declines the liability for any consequence of installation and usage of the program. It is put on disposal in a good faith, and its installation and usage is on the personal responsibility.

## My rosary User Instructions

After a successful installation of *My rosary* and LV RT programs, the program *My rosary* can be used. Initial interface of the *My rosary* is shown on the figure.



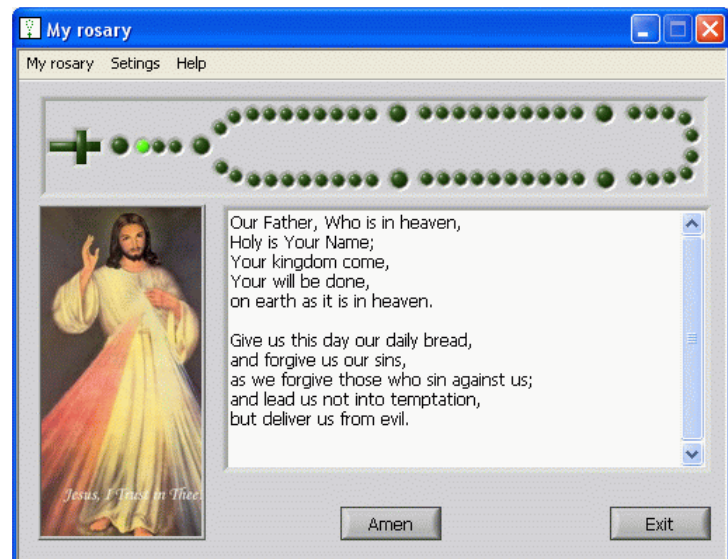
Selecting Settings from the menu bar, user can select interface language (Croatian, English or German) and the kind of rosary (The Holy Rosary or the Chaplet of Divine Mercy).



Pressing the „Begin“ button the program starts the rosary. The following prayer is shown after pressing the „Amen“ button.

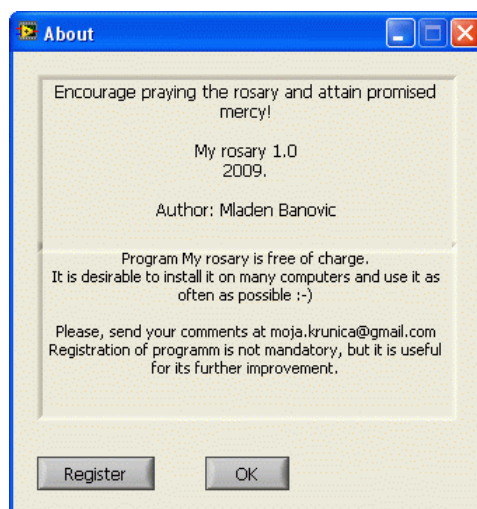


In the upper part of the window is the display of a rosary on which a bead of the current prayer lights.



Selecting „Help→About“ from menu bar the window as on the figure appears.

Press the „Register“ button to start the registration process.




Enter the correct data:

- Name
- Last name
- e-mail address and
- State.

Press the „Send“ button, and few moments after this the program is registered.

Now you can continue your praying.

Program is ended pressing the „Exit“ button.



The image shows a Windows-style dialog box titled "About". It contains four text input fields stacked vertically, labeled "Name", "Last name", "email address", and "State". Below the input fields are two buttons: "Send" and "Cancel". The dialog box has a blue title bar with standard window control buttons (minimize, maximize, close) on the right side.